

MAGAZINE LOADING INSTRUCTIONS
GEN12 SHOTGUN
15 ROUND ROTARY MAGAZINE



MAGAZINE LOADING INSTRUCTIONS

GEN12 SHOTGUN

15 ROUND ROTARY MAGAZINE

THESE SAFETY WARNINGS ARE FOR YOUR PROTECTION AS WELL AS THE SAFETY OF OTHERS. DISREGARDING INFORMATION IN THIS MANUAL COULD RESULT IN SERIOUS INJURY OR DEATH TO YOU OR THOSE AROUND YOU.



Be certain this owner's manual is available for reference and is kept with this firearm if transferred to another party.



After performing any work on your firearm or magazines such as cleaning, adjustments, disassembly or installation of any accessory, the firearm and/or magazine should be rechecked for proper functioning before firing live ammunition.



Firearms are complex mechanisms. Any modification, alteration, or improper fitting of parts may result in a dangerous malfunction, damage to the firearm, and could cause serious injury or death to you or those around you. The firearm's owner must accept full responsibility for the correct reassembly and functioning of the firearm after any disassembly or replacement of parts.



If you do not understand any of the material in this manual or have any questions, contact Genesis Arms Customer Service or a qualified gunsmith.



Do not attempt to load, handle or use your Genesis Arms firearm until you read and understand the information contained in this owner's manual.



Before handling your firearm, you should learn how it operates and how to maintain it. This includes knowing its basic parts, how the manual safety and other safety features operate, how to safely open and close the action and how to safely load and unload ammunition from the firearm. Improper use and handling is dangerous and could cause serious injury or death to you or those around you. All users of the firearm must become thoroughly familiar with the instructions in this manual.

Continued on next page



As the owner of a firearm, you must undertake the full-time responsibility of safe firearms handling for your own safety and the safety of those around you:

- Keep all firearms and ammunition out of the reach of children.
- Store your firearms and ammunition separately.
- Never store a loaded firearm.
- Never leave a loaded firearm unattended.
- Never transport a loaded firearm in a vehicle.
- Unload your firearm when you have stopped shooting and when you have to climb a tree, fence, cross a slippery surface or have to transport it in a vehicle.
- The safety should remain fully in the “ON” (SAFE) position and the firearm unloaded at all times until you are in a place where it is safe to shoot, keeping your finger off the trigger and outside of the trigger guard until you are aiming at the intended target and have decided to fire.
- Never shoot at water, rocks or any hard surface. Shots may glance off such surfaces and cause injuries.
- Do not use alcohol or drugs before or while handling firearms.
- Do not touch the trigger while the safety is being engaged or disengaged.



Always point the muzzle of your firearm in a safe direction, regardless of whether the firearm is loaded or unloaded. You should become thoroughly familiar with the function and operation of this firearm and the instructions supplied with it.



Always treat every firearm as if it is loaded. Give your firearm to someone with the action open (bolt fully rearward), and the safety fully in the “ON” (SAFE) position. Insist on the same procedure when receiving a firearm from someone else. Learn the location of all the safety features of your firearm and how they operate.



Always wear eye and ear protection when shooting. Shooting without proper ear protection can cause hearing damage. The use of eye protection during any type of shooting is important to protect your vision.



When using a firearm with mounted optics, maintain an adequate distance between the rear of the scope and your face at all times. Be certain the scope installation does not interfere with access to, or the proper functioning of the safety.



We specifically disclaim any responsibility for damage or injury whatsoever occurring in connection with, or as a result of, the use of faulty, or non-SAAMI standard, or “remanufactured” or handloaded (reloaded) ammunition. Additionally, we disclaim any responsibility for damage or injury which results from any modifications or changes that are not a part of the firearm or magazine as delivered from the factory.



Learn to clean your firearm thoroughly and make certain no oil, grease or other materials are blocking the barrel. Obstructions of any kind can cause damage to the firearm and could cause serious injury or death to you or those around you.

AMMUNITION COMPATIBILITY/ MAGAZINE BREAK-IN

Ammunition Compatibility: Olin/Winchester Military Issue Green Hull Shotgun Ammunition is not compatible with this magazine. As with any firearm magazine, utilize SAAMI spec ammo for optimum performance. This magazine is only compatible with 2 3/4" ammunition.



Prior to professional use or use in the field, check to be certain the correct ammunition has been selected for use and that the selected ammunition is compatible and functions properly with the shotgun and magazine.



We specifically disclaim any responsibility for damage or injury whatsoever occurring in connection with, or as a result of, the use of faulty, or non-SAAMI standard, or “remanufactured” or handloaded (reloaded) ammunition. Additionally, we disclaim any responsibility for damage or injury which results from any modifications or changes that are not a part of the firearm or magazine as delivered from the factory.

Magazine Break-In: The performance of this magazine will improve after running 3 full magazines through proper loading and live fire use. For optimal performance, always perform break-in cycles prior to professional field use.

GENERAL LOADING INSTRUCTIONS



WARNING

Removal of the magazine will not unload the firearm! Removing the magazine will not remove any shotshell which is in the firearm's chamber! A shotshell in the firearm's chamber can still be fired, even after the firearm's magazine has been removed! After you remove the magazine always visually and physically inspect the chamber and receiver to ensure the firearm is completely unloaded!

FIREARM WILL FIRE WITH MAGAZINE REMOVED.

Load the magazine by inserting one shotshell at a time.

Press one shell down against the follower, (Fig. A) and then push the shotshell fully rearward until the shotshell is positioned completely rearward against the rear wall of the magazine tower.

Repeat the operation until the magazine has reached its full capacity, or until the desired number of shotshells have been loaded.

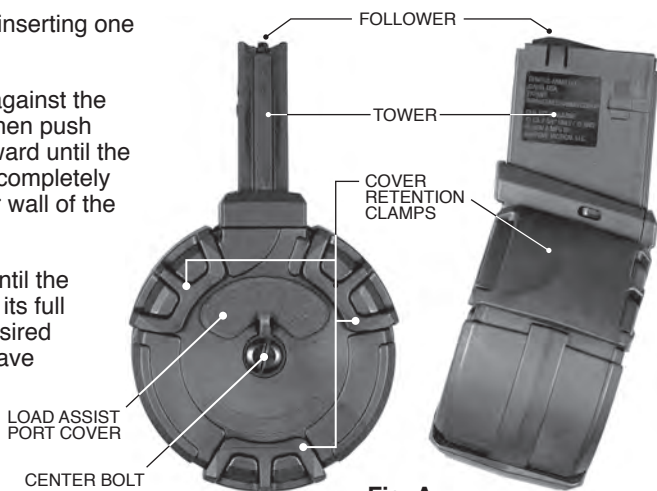
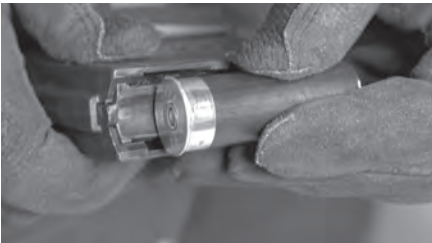


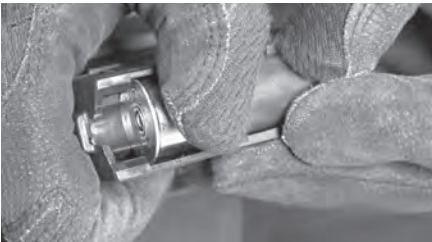
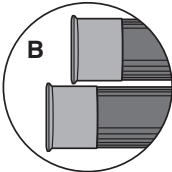
Fig. A

LOADING HIGH-BRASS SHELLS



1. Place the shell in the opening. Use your thumb to help hold the shell in parallel alignment, and the other hand to stabilize the shell.

NOTE: Brass rims should be loaded in front of the rim of the previous round in the magazine, the rim placed on the brass, NOT the plastic casing.



2. Hold the shell in position and press down firmly on the brass end with your thumb.



3. Push down and toward the rear of the magazine tower to move the shell into its final position.

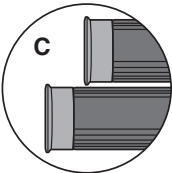
NOTE: The described loading method is one of several methods used to load this magazine. Individual techniques may vary.

LOADING LOW-BRASS SHELLS

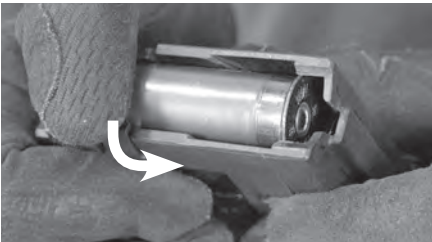


1. Place the shell in the magazine tower opening. Use your index finger or thumb to help hold the shell in parallel alignment, and the other hand to stabilize the shell and magazine.

NOTE: Short brass shells cannot be loaded brass on brass. Brass rims should however be loaded in front of the rim of the previous round in the magazine.

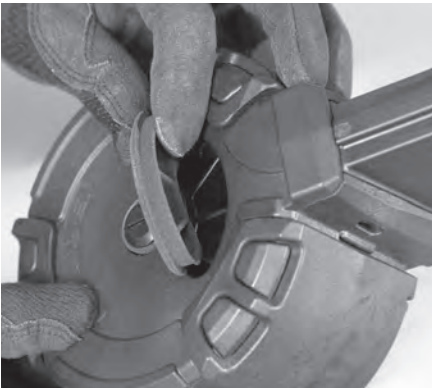


2. Hold the shell in position and press down firmly with your thumb.

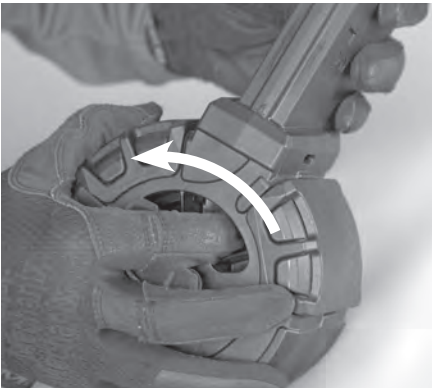


3. Push the crimped end of the shell down and toward the rear of magazine with your thumb until the shell slides over the brass on the preceding shell, and moves completely into final position towards rear of magazine tower, repeat for remaining shells.

LOAD ASSIST ACCESS/USE



1. To ease loading, this magazine design includes integrated Load Assist Fins on the internal sprocket. To access Load Assist Port, open the rubber dust cover.



2. Insert index finger into port and rotate sprocket counterclockwise. Rotating the Internal Assist will lower the magazine follower and allow for easier loading. Take precaution to not load the brass rim behind the brass rim of the previous shell (see Fig. B, Pg 4).

DISASSEMBLY & REASSEMBLY



1. Access internal magazine cavity by removing Center Bolt, rubber Load Assist Port Cover, and three perimeter Cover Retention Clamps. Utilizing a wide blade screwdriver, remove Center Bolt and Load Assist Port Cover.



2. Remove the first Cover Retention Clamp by inserting medium blade screwdriver under center portion of Clamp and with moderate pressure pry up and toward the edge of the magazine. This step may take a few initial attempts to determine the correct amount of pressure and technique.

NOTE: This process may leave a mark on the surface plastic of Magazine Lid. Repeat steps for remaining two Clamps.

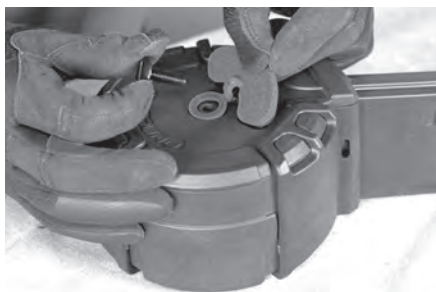
Continued on next page

DISASSEMBLY & REASSEMBLY (CONT.)



3. With all three clamps removed, lift off the Magazine Lid.

NOTE: DO NOT disassemble the magazine any further than these steps described. All standard maintenance can be performed at this level of disassembly. Any further disassembly will negatively impact the performance of the magazine, may cause severe injury and will void any warranties associated with this magazine.



4. To reassemble, reverse the above steps. Take caution to not over tighten Center Bolt. Test function of reassembled magazine prior to field use.

CLEANING & MAINTENANCE

Routine maintenance is recommended to maintain optimal magazine performance. To access the internal magazine cavity see the above Magazine Disassembly/Reassembly steps.

- Only use plastic safe cleaners and dry lubricants. Avoid lubricants that attract or accumulate dust, dirt and moisture.
- Internal surfaces may be wiped clean with a non-abrasive dry cloth or small brush. Inspect internal cavities for any leaked buffer material (small white beads from shotgun shells), loose lead shot, plastic shell hull shavings or any other foreign materials that may negatively impact performance of internal magazine components.
- Compressed air can assist with removing debris from internal cavities.
- DO NOT attempt to disassemble, adjust or modify internal magazine components.
- Let internal magazine surfaces dry prior to reassembling magazine.

CUSTOMER SERVICE

For assistance related to GEN 12 Magazines or Shotguns, please contact Genesis Arms Customer Service.

Genesis Arms LLC

4259 West Seltice Way Ste B
Coeur d'Alene, ID 83814

Phone: (208) 704-2244

Email: info@genesisarms.com

This image shows a single sheet of white paper with horizontal ruling lines. The lines are evenly spaced and run across the width of the page. There are no margins, text, or other markings on the paper.